

## WALK THE CUSTOMER THROUGH EACH OF THE FOLLOWING KEY DELIVERY FEATURES

### HOW TO DEFROST - page 18-21

- 1 Press the front defrost button
- 2 Set to the warmest temperature setting
- 3 Set to the highest fan speed

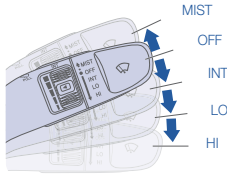
### TIRE PRESSURE MONITORING SYSTEM (TPMS) - page 38



LOW TIRE PRESSURE INDICATOR /  
TPMS MALFUNCTION INDICATOR

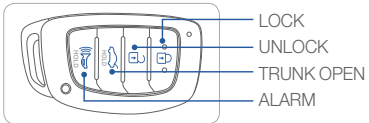
NOTE: Tire pressure may vary in colder temperatures causing the low tire pressure indicator to illuminate. Inflate tires according to the Tire Pressure Label located on the driver's side door pillar.

### WINDSHIELD WIPER / WASHER - page 09



- To activate wipers, move the speed control switch down to one of the three positions (INT, LO, HI)
- To adjust "INT" speed, move the lever
- To spray the washer fluid, pull the lever towards you
- Push the lever up for a single wiper pass

### UNLOCKING VEHICLE - page 02



### BLUE LINK - pages 25-27

- Assist with creating MyHyundai.com account
- Assist with Blue Link enrollment
- Show Blue Link Users Manual & tear out Voice Commands / Quick Tip Card
- Encourage customers to press the Blue Link button

## MAINTENANCE

Scheduled Maintenance	Normal Usage	Severe Usage*
Engine Oil and Filter * (2.0L only)	Replace 7,500 or 12 mos.	Replace 3,750 or 6 mos.
Fuel Additive *1	Add 7,500 or 12 mos.	Add Same as Normal
Tire Rotation	Perform 7,500	Perform 7,500
Air Cleaner Filter	Inspect 7,500 Replace 30,000	Inspect Same As Normal Replace More Frequently
Vacuum Hose	Inspect 7,500	Inspect Same As Normal
Climate Control Air Filter (for Evaporator and Blower Unit)	Replace 15,000	Replace More Frequently
Air Conditioning Refrigerant	Inspect 15,000	Inspect Same As Normal
Brake Hoses & Lines	Inspect 15,000	Inspect Same As Normal
Drive Shafts & Boots	Inspect 15,000	Inspect 7,500
Exhaust Pipe & Muffler	Inspect 15,000	Inspect Same As Normal
Front Disc Brake/Pads, Callipers	Inspect 15,000	Inspect More Frequently
Rear Brake Drum / Linings Rear Brake Disc / Pads	Inspect 15,000	Inspect More Frequently
Steering Gear Box, Linkage & Boots / Lower Arm Ball Joint, Upper Arm Ball Joint	Inspect 15,000	Inspect More Frequently
Suspension Mounting Bolts	Inspect 15,000	Inspect Same As Normal
Brake / Clutch Fluid	Inspect 30,000	Inspect Same As Normal
Crankcase Ventilation Hose	Inspect 30,000	Inspect Same As Normal
Fuel Filter	Inspect 30,000	Inspect Same As Normal
Fuel Lines, Fuel Hoses and Connections	Inspect 30,000	Inspect Same As Normal
Fuel Tank Air Filter	Inspect 30,000	Inspect Same As Normal
Parking Brake	Inspect 30,000	Replace More Frequently
Vapor Hose, Fuel Tank & Fuel Filler Cap	Inspect 30,000	Replace Same As Normal
Spark Plugs (2.0L only)	Replace 105,000	Replace More Frequently
Drive Belt (Alt, A / C)	1st Inspect 60,000 or 72 mos. Add'l Inspect 15,000 or 24 mos.	Inspect Same As Normal
Coolant	1st Replace 120,000 or 120 mos. Add'l Replace 30,000 or 24 mos.	Replace Same As Normal
Manual Transmission Fluid	Inspect 37,500	Replace 75,000
Automatic Transmission Fluid	No check, No service required	Replace 60,000

\*Check the engine oil regularly between recommended oil change. Hyundai recommends Quaker State oil.

\*1 If TOP TIER Detergent Gasoline is not available, one bottle of additive is recommended. Additives are available from your authorized Hyundai dealer along with information on how to use them. Do not mix other additives.

\*See Owner's Manual for details.

Looking for more detailed information? This Quick Reference Guide does not replace your vehicle's Owner's Manual. If you require additional information or are unsure of a specific issue, we recommend that you always refer to the vehicle's Owner's Manual or contact your authorized Hyundai dealer. The information contained in this Quick Reference Guide is correct at the time of printing; however, specifications and equipment can change without notice. No warranty or guarantee is being extended in this Quick Reference Guide, and Hyundai reserves the right to change product specifications and equipment at any time without incurring obligations. Some vehicles are shown with optional equipment.

NP150-F2017  
(Rev 12/26/15)  
Printing 12/29/15

HYUNDAI **ELANTRA**  
Quick Reference Guide

www.hyundai.com

**HYUNDAI**  
NEW THINKING.  
NEW POSSIBILITIES.

Roadside Assistance: **1-800-243-7766**  
 Consumer Affairs: **1-800-633-5151**  
 Sirius XM® Radio: **1-800-967-2346**  
 Blue Link: **1-855-2BLUELINK**  
**(1-855-225-8354)**

# Table of contents

## GETTING STARTED

Driver Position Memory System	05
Engine Start / Stop Button	05
Front Seat Adjustment	03
Headrest Adjustment	04
Seat Belt Adjustment	04
Smart Key	02

## FEATURES AND CONTROLS

Automatic Climate Control	20-21
Child - Protector Rear Door Lock	12
Clock Adjustment	07
Driver's Main Controls	07
Fuel Filler Lid	06
Headlights	08
Homelink Wireless Control System	13
Instrument Cluster	14-15
Instrument Panel Illumination	17
Interior Lights	10
LCD Display Control	16
LCD Display Modes	16
Manual Climate Control	18-19
Rear Seat Folding	12
Rear View Camera	13
Seat Warmer	12
Smart Trunk	11
Steering Wheel Adjustment	06
Sunroof	10
Trunk Opening	11
Wipers and Washer	09

## MULTIMEDIA

Android Auto	32-33
Apple car play™	34-37
Blue Link Telematics System	25-27
Bluetooth Operational Tips	22
Bluetooth Phone Operation	24
Bluetooth Phone Pairing	23
Navigation	29-31
Standard Audio	28
Steering Wheel Audio Control	22

## DRIVING

AUX, USB and iPod Port	31
Automatic Transmission	39
Autonomous Emergency Braking (AEB)	41
Blind Spot Detection (BSD) System	41
Cruise Control / Smart Cruise Control	43
Drive Mode Integrated Control System	42
Electronic Stability Control (ESC)	40
Lane Keeping Assist System (LKAS)	40
Tire Pressure Monitoring System (TPMS)	38

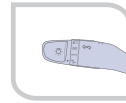
\* Some vehicles may not be equipped with all the listed features.

## Frequently Asked Questions

- Pair phone to your vehicle. Refer to page 23-24



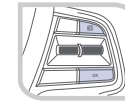
Driver Position Memory System  
Page05



Headlights  
Page08



Instrument Cluster  
Page14-15



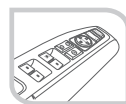
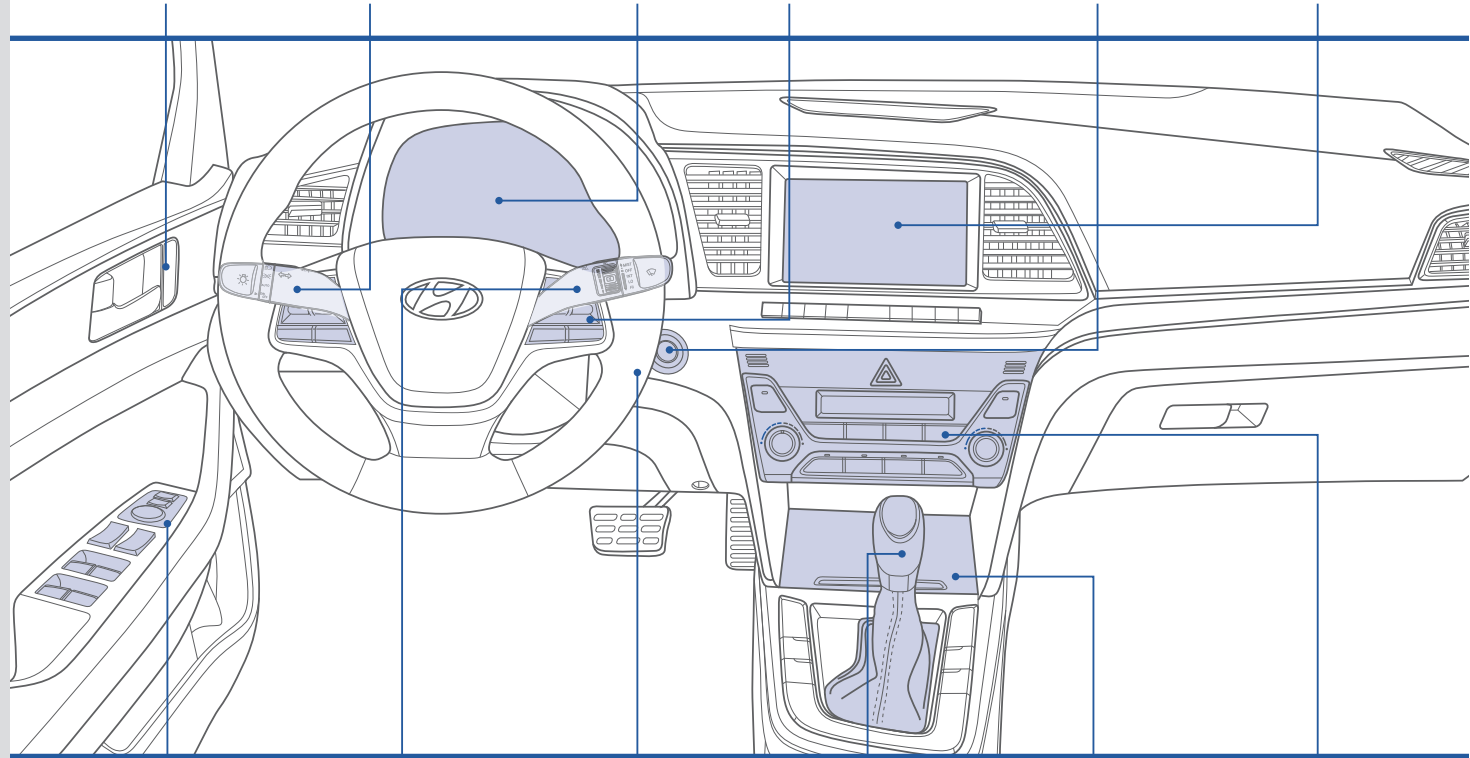
Cruise Control/ Smart Cruise Control  
Page43



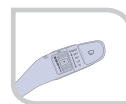
Engine Start/ Stop Button  
Page05



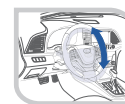
Navigation  
Page29-31



Driver's Main Controls  
Page07



Wipers and Washer  
Page09



Steering Wheel Adjustment  
Page06



Automatic Transmission  
Page39



AUX, USB and iPod  
Page31



Climate Control  
Page18-21

Use this Quick Reference Guide to learn about the features that will enhance your enjoyment of your Hyundai. More detailed information about these features are available in your Owner's Manual.

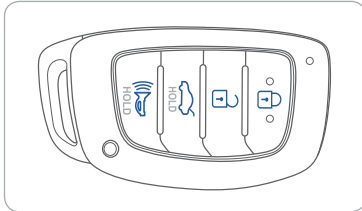
## ⚠ WARNING!

To reduce the risk of serious injury to yourself and others, read and understand the important SAFETY INFORMATION in your Owner's Manual.

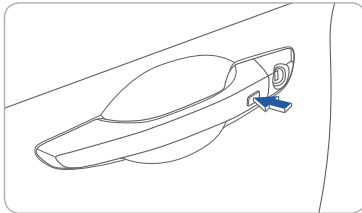


## GETTING STARTED

### SMART KEY



- Lock
- Unlock
- Trunk Open
- Panic

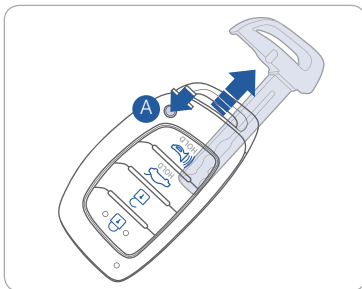


**Driver's Door Lock / Unlock**  
Smart key must be within 28~40in. from the outside door handle.

**Press:** Once - Unlock driver door  
Twice - Unlock all doors  
Third - Lock all doors

#### NOTE:

To change the two press unlock setting, please refer to chapter 3 of your Owner's Manual.



#### Removing the Mechanical Key

Press and hold the release button **A** to remove the mechanical key.



### FRONT SEAT ADJUSTMENT (Manual)



#### Forward and Backward **1**



#### Seat Height **2**



- Push down on the lever several times to lower the seat cushion.
- Pull up on the lever several times to raise it.

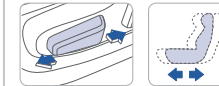
#### Seatback Angle **3**



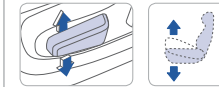
### FRONT SEAT ADJUSTMENT (Power, for the Driver's Seat)



#### Forward and Backward **1**



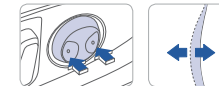
#### Seat Height



#### Seatback Angle **2**

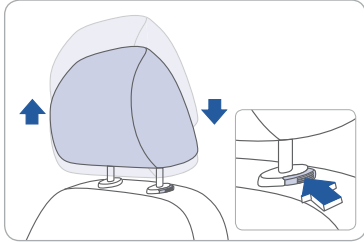


#### Lumbar Support **3**





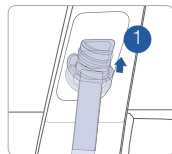
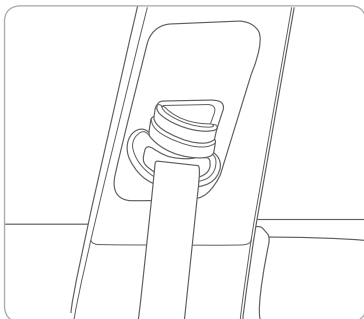
## HEADREST ADJUSTMENT



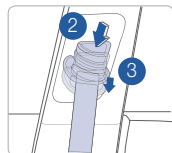
**To Raise the Headrest:**  
Pull the headrest up.

**To Lower the Headrest:**  
Press the lock button while pressing down on the headrest.

## SEAT BELT ADJUSTMENT (Front seat)

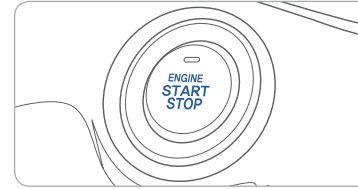


Pull up to raise.



Press button and push down to lower.

## ENGINE START / STOP BUTTON



With the ignition OFF and foot OFF of the brake pedal, press the Engine Start / Stop button.

- Once for ACC (Accessory) mode.
- Twice for ON mode.
- Three times for OFF.

To start the engine in any mode (including OFF), press the Engine Start / Stop button while pressing down on the brake pedal (and the clutch pedal for the manual transmission).

To shut the engine OFF, place the shift lever in P (Park) and press the Engine Start / Stop button.

To shut the engine OFF for manual transmission, place the shift lever in N (Neutral) and set parking brake, then press the Engine Start/Stop button.

### Emergency Situations

#### Shut off engine while driving

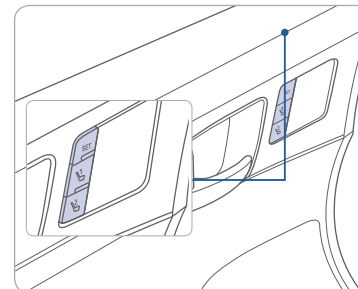
Press the Engine Start / Stop button for over 2 seconds or 3 times consecutively within 3 seconds.

#### Restart engine while driving

Press the Engine Start / Stop button with the shift lever in N (Neutral).

For manual transmission, depress the clutch pedal with shift lever in N (Neutral), then press the Engine Start/Stop button.

## DRIVER POSITION MEMORY SYSTEM



### Storing

1. Adjust the driver's seat position, outside rearview mirror position and instrument panel illumination intensity.
2. Press the SET button. The system will beep once.
3. Press one of the memory buttons (1 or 2) within 5 seconds. The system will beep twice.

**NOTE:** Transmission must be in P (Park).

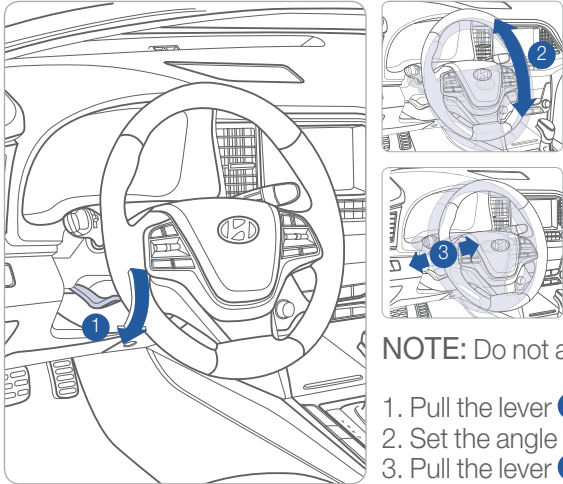
### Recalling

Press the desired memory button (1 or 2). The system will beep once.



## FEATURES AND CONTROLS

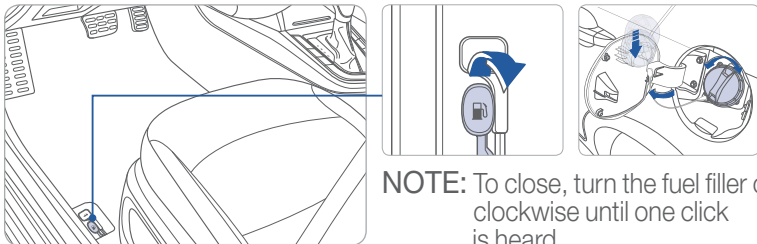
### STEERING WHEEL ADJUSTMENTS



**NOTE:** Do not adjust while driving.

1. Pull the lever ① down.
2. Set the angle ② and ③ distance.
3. Pull the lever ① up to lock position.

### FUEL FILLER LID

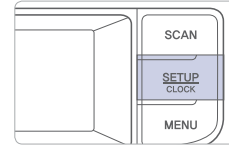


**NOTE:** To close, turn the fuel filler cap clockwise until one click is heard.



### CLOCK ADJUSTMENT

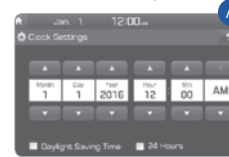
With Audio (without touch screen)



1. Press the SETUP / CLOCK button.
2. Select "Clock", then select "Clock Settings".
3. Adjust the number and press the TUNE knob to set the time.

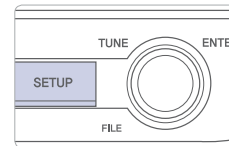
**NOTE:** Rotate the TUNE knob to scroll to desired menu / number. Press the TUNE knob to select / set the highlighted option.

With Audio (touch screen)



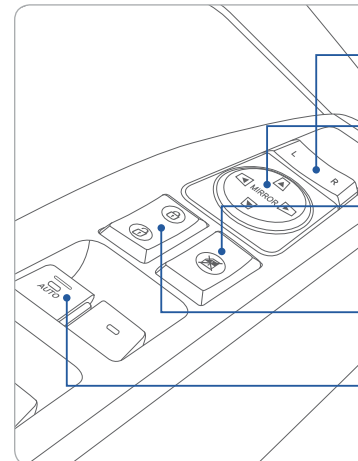
1. Press the SETUP button on the head unit.
2. Touch the "Clock" icon on the screen.
3. Press the arrow button to change the Hour, Minute, etc.
4. Press back button ① to save changes and go to previous screen.

With Navigation



1. Press the SETUP button.
2. Touch the "Clock" icon on the screen.
3. Select GPS time to ON.
4. Press back button ① to save changes and go to previous screen.

### DRIVER'S MAIN CONTROLS



#### Side View Mirror

Move the lever towards L (Left) or R (Right) on the switch.

Adjust the mirror by using the mirror adjustment control switch.

#### Power Window Lock Button

Disables the power window switches on the passenger doors.

#### Door Lock

Locks / unlocks all doors.

#### Window Auto Down / Up (if equipped)

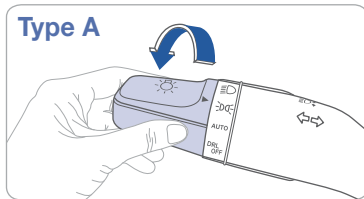
Press past detent to fully open / close the window.



## FEATURES AND CONTROLS

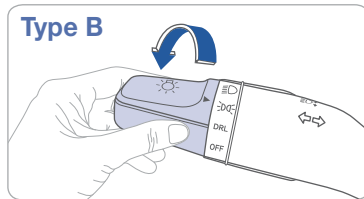


### HEADLIGHTS



Type A

- Headlight Position
- Parking Light Position
- Auto Light Position
- DRL OFF Position



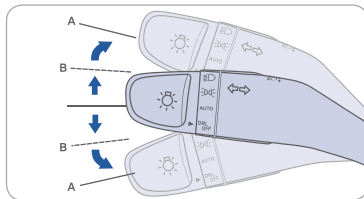
Type B

- Headlight Position
- Parking Light Position
- DRL Position
- OFF Position

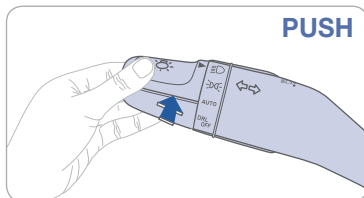
#### Headlight Delay

Headlights may stay on for 15 seconds after exiting and locking up the vehicle. Press the remote lock button twice to turn off the headlights.

#### Turn Signals and Lane Change Signals

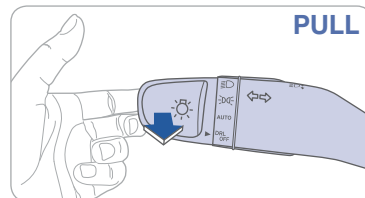


#### High Beam



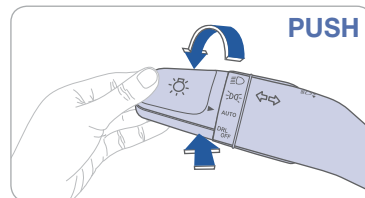
**PUSH**

#### Flashing High Beam



**PULL**

#### Smart High Beam



**PUSH**

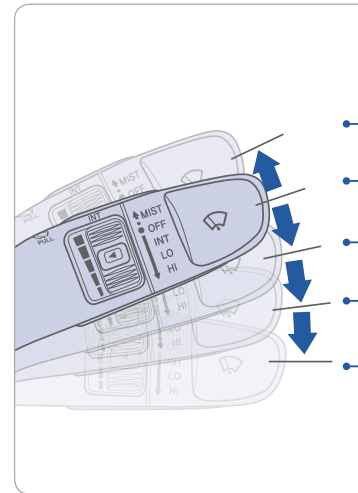
#### NOTE:

To turn off the high beam, pull the lever towards you.

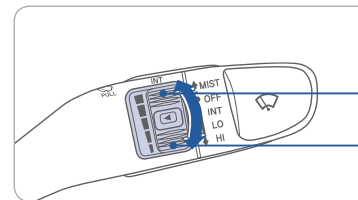
#### Smart High Beam Function

1. Select the AUTO position on stalk.
2. Push the lever forward to engage the Smart High beam.
3. Pull the lever towards you to disengage.

### WIPERS AND WASHER

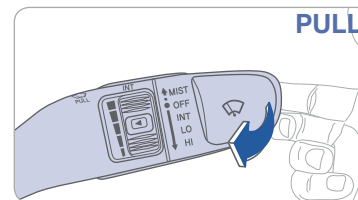


- MIST - Single wipe
- OFF
- INT - Intermittent wipe
- LO - Low wiper speed
- HI - High wiper speed



Intermittent Wipe Time Adjustment  
Move the speed control switch

- Fast wiper speed
- Slow wiper speed



**PULL**

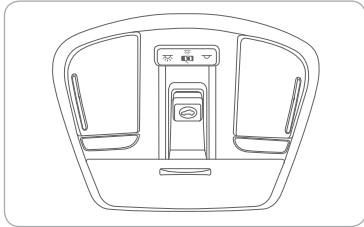
Windshield Washer  
Pull the lever gently towards you to spray washer fluid on the windshield and to run the wipers 1-3 cycles.



## FEATURES AND CONTROLS



### SUNROOF

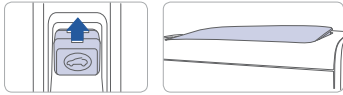


#### Sliding the Sunroof



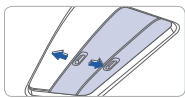
Press the sunroof control lever backward or forward to open or close the sunroof.  
Press the sunroof control lever backward or forward to the second detent position to open or close the sunroof completely.

#### Tilting the Sunroof



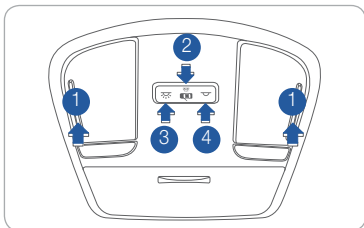
Push the sunroof control lever upward to tilt the sunroof.  
Push the sunroof control lever upward once more to close the sunroof.

#### Sunshade



The sunshade will open with the sunroof when the glass panel opens.

### INTERIOR LIGHTS



#### Front Map Lamp ①

Press the lens to turn on / off the map lamp.

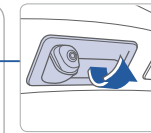
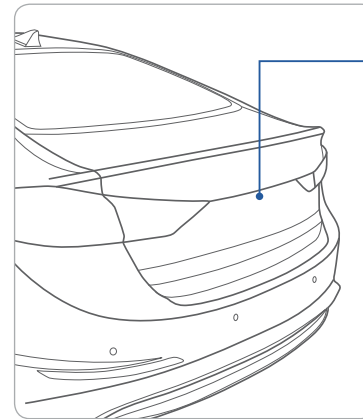
#### Front Door Lamp ( ) ②

Lights will turn on when any door is open.

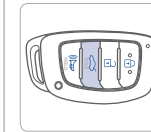
#### Front Room Lamp ( ) ③ ④

Press the switch to turn on / off the room lamp (overhead lamp).

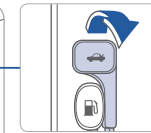
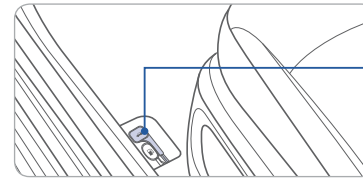
### TRUNK OPENING



Press to open.  
Smart key needs to be within the range.

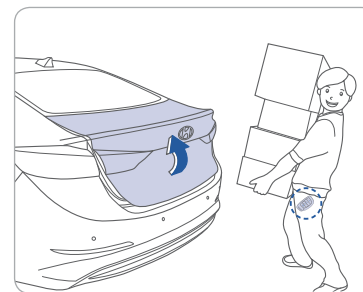


Press and hold.



Pull the trunk release lever in the vehicle.

### SMART TRUNK



#### Smart Trunk

Trunk will open automatically when detecting smart key within the range near the trunk for over 3 seconds.

#### To enable Smart Trunk function:

Vehicle must be in P (Park) to adjust the settings in the User Settings mode.

1. Select "Door / Trunk" in the User Settings in the instrument cluster.
2. Check "Smart Trunk".

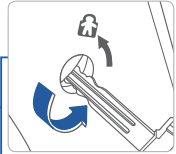
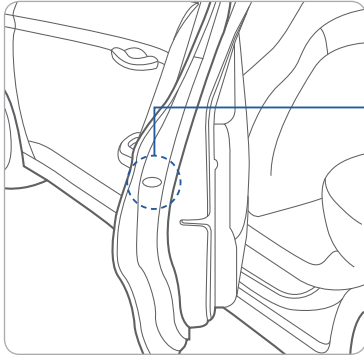
#### NOTE:


Function is active after 15 seconds when all doors are closed and locked. The vehicle will also provide an audible and visual alarm while activating. Please refer to your Owner's Manual for further information.

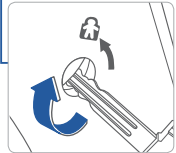



## FEATURES AND CONTROLS

### CHILD-PROTECTOR REAR DOOR LOCK

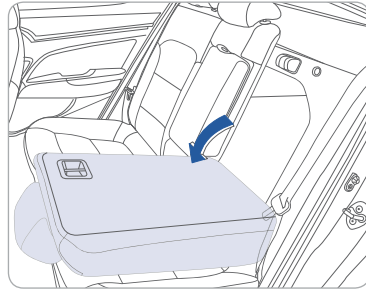
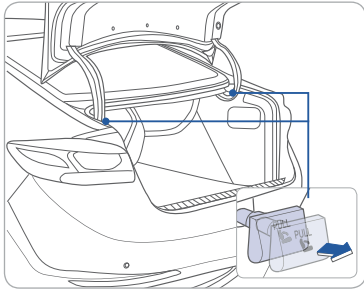


**Lock**   
Insert a screwdriver or key into the hole and turn it counter clockwise to the lock position.

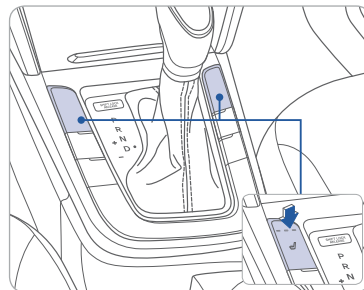


**Unlock**   
Insert a screwdriver into the hole and turn it clockwise to the unlock position.

### REAR SEAT FOLDING



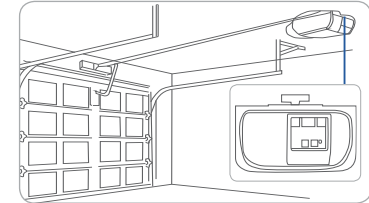
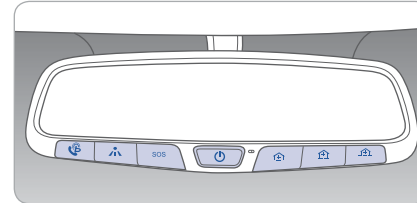
### SEAT WARMER (Front seat)



Each time you push the switch, the setting is changed as following:



### HOMELINK WIRELESS CONTROL SYSTEM



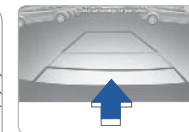
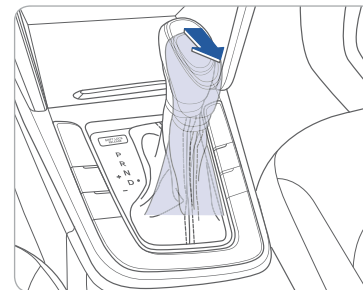
#### Standard Programming

To train most devices, follow these instructions:

1. For the first-time programming, press and hold the two outside buttons, HomeLink® Channel 1 and Channel 3 buttons, until the indicator light begins to flash (after 10 seconds). Release both buttons. Do not hold the buttons for over 20 seconds.
2. Position the end of your hand-held transmitter 1-3in. (2-8cm) away from the HomeLink® buttons while keeping the indicator light in view.
3. Simultaneously press and hold both the HomeLink® and the hand-held transmitter button. DO NOT release the buttons until step 4 has been completed.
4. While continuing to hold the buttons, the red indicator Status LED will flash slowly and then rapidly after HomeLink® successfully trains to the frequency signal from the hand-held transmitter. Release both buttons.

For more detailed information, please refer to your Owner's Manual, or visit [www.homelink.com](http://www.homelink.com) or call (800) 355-3515.

### REAR VIEW CAMERA



When the transmission is shifted into R (Reverse), the rear view camera displays the area behind the vehicle.

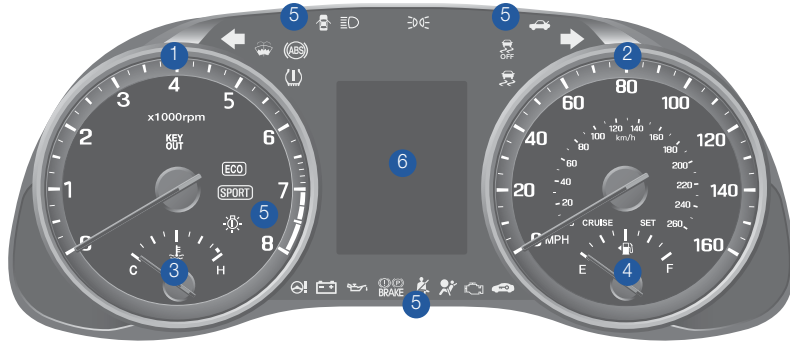




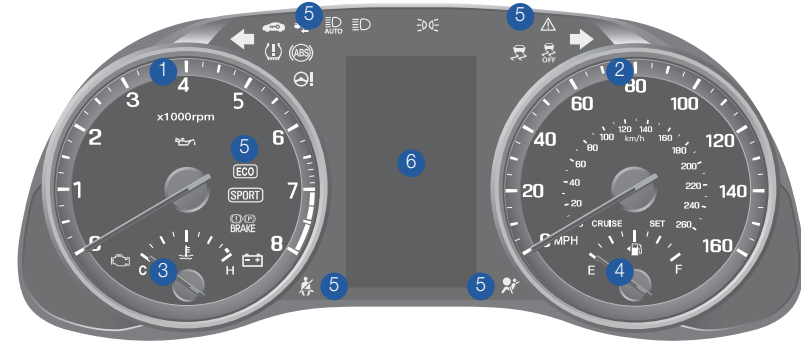
## INSTRUMENT CLUSTER



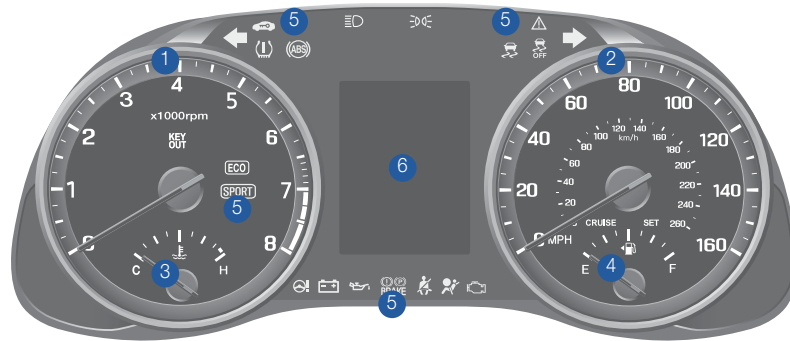
### Conventional Cluster



### Supervision Cluster (Type B)



### Supervision Cluster (Type A)



- 1 Tachometer
- 2 Speedometer
- 3 Engine Coolant Temperature Gauge
- 4 Fuel Gauge
- 5 Warning and Indicator Lights
- 6 LCD Display (including Trip Computer)

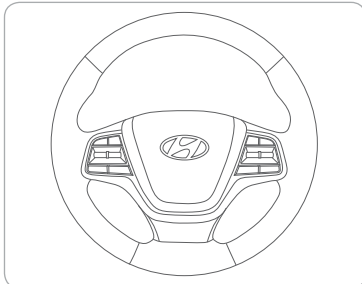


## INSTRUMENT CLUSTER

### DISPLAY MODES (for Supervision Clusters)

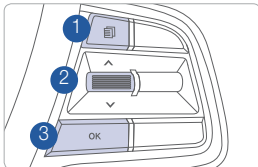
Modes	Symbol	Description
Trip Computer		This mode displays driving information such as tripmeter, fuel economy, etc.
Turn By Turn (TBT) (if equipped)		This mode displays the state of the navigation.
SCC / LKAS (if equipped)		This mode displays the state of the Smart Cruise Control (SCC) and Lane Keeping Assist System (LKAS).
A / V (if equipped)		This mode displays the state of the A / V (Audio Visual) system.
Information	or  or	This mode displays service interval and warning messages.
User Settings		Changes settings.

### DISPLAY MODE CONTROL (for Supervision Clusters)

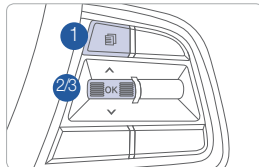


- : MODE button for changing modes
- : MOVE switch for changing items
- : SELECT / RESET button for setting or resetting the selected item

#### Type A



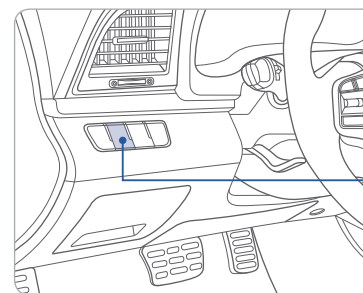
#### Type B



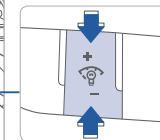
### WARNINGS AND INDICATORS

Air Bag Warning Light	Seat Belt Warning Light	Parking Brake & Brake Fluid Warning Light
Anti-Lock Brake System (ABS) Warning Light	Electronic Brake Force Distribution (EBD) System Warning Light	
Electric Power Steering (EPS) Warning Light	Malfunction Indicator Lamp (MIL)	Charging System Warning Light
Engine Oil Pressure Warning Light	Low Fuel Level Warning Light	Low Tire Pressure Warning Indicator/TPMS Malfunction Lamp
Autonomous Emergency Braking (AEB) Warning Light	Headlight Warning Light	AFLS Adaptive Front Lighting System (AFLS) Warning Light / Dynamic Bending Light (DBL)
Master Warning Light	Door Ajar Warning Light	Trunk Open Warning Light
Electronic Stability Control (ESC) Indicator	Electronic Stability Control (ESC) OFF Indicator	Immobilizer Indicator
Turn Signal Indicator	High Beam Indicator	Light ON Indicator
Smart High Beam Indicator	CRUISE Cruise Indicator	SET Cruise SET Indicator
SPORT Mode Indicator	ECO Mode Indicator	Lane Keeping Assist System (LKAS) Indicator

### INSTRUMENT PANEL ILLUMINATION



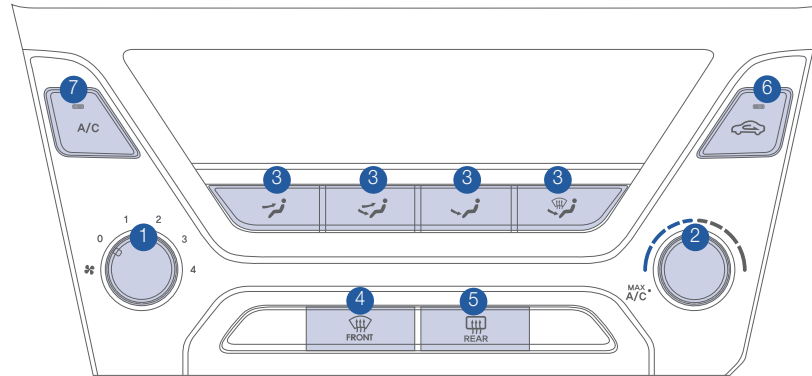
Press - or + to adjust the instrument cluster illumination brightness.





## CLIMATE CONTROL

### MANUAL CLIMATE CONTROL

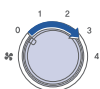


- 1 Fan Speed Control Knob
- 2 Temperature Control Knob
- 3 Mode Selection Buttons
- 4 Front Windshield Defroster Button
- 5 Rear Window Defroster Button
- 6 Air Intake Control Button
- 7 A / C (Air Conditioning) Button

#### DEFOGGING/DEFROSTING



1. Press the defrost button.



3. Set the fan speed to the highest speed.



2. Select the warmest temperature.

#### AIR INTAKE CONTROL

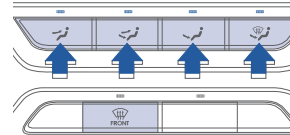


Recirculated air position (LED on)



Outside (fresh) air position (LED off)

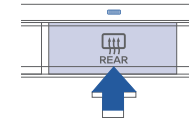
#### MODE SELECTION



Changes the direction of the air flow as following:

- Face-Level
- Bi-Level
- Floor-Level
- Floor & Defrost-Level
- Defrost-Level

#### REAR WINDOW DEFROSTER



Press to activate / deactivate the rear defroster.

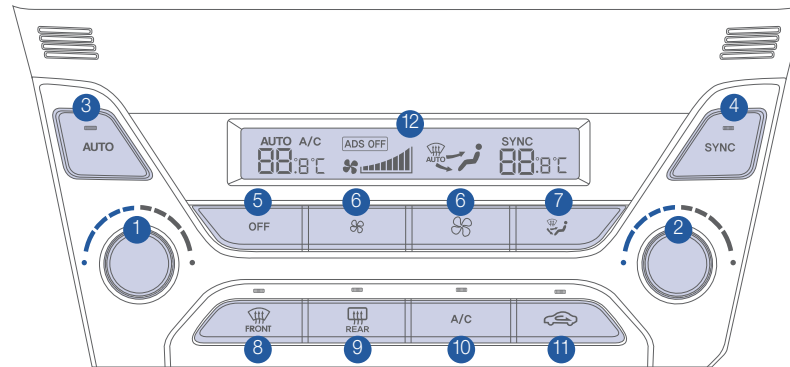
#### NOTE:

To reduce the tendency of the glass fogging and also to improve visibility, keep the interior surface of the windshield clean by wiping it with a clean cloth and glass cleaner. In addition, select air intake control to the outside (fresh) air position whenever possible while operating the vehicle.



## CLIMATE CONTROL

### AUTOMATIC CLIMATE CONTROL

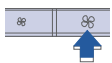


- 1 Driver's Temperature Control Knob
- 2 Passenger's Temperature Control Knob
- 3 AUTO (Automatic Control) Button
- 4 SYNC Button
- 5 OFF Button
- 6 Fan Speed Control Button
- 7 Mode Selection Button
- 8 Front Windshield Defrost Button
- 9 Rear Window Defrost Button
- 10 Air Conditioning Button
- 11 Air Intake Control Button
- 12 Climate Control Information Screen

#### DEFOGGING/DEFROSTING



1. Press the defrost button.



3. Set the fan speed to the highest speed.



2. Select the warmest temperature.

#### NOTE:

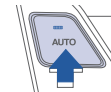
To reduce the tendency of the glass fogging and also to improve visibility, keep the interior surface of the windshield clean by wiping it with a clean cloth and glass cleaner. In addition, select air intake control to the outside (fresh) air position whenever possible while operating the vehicle.

#### SYSTEM OFF

Pressing the OFF button will place the system to the OFF mode.

- Climate control fan will turn off.
- Outside (fresh) air position will be selected.
- Vented air will be at last set temperature.

#### AUTOMATIC HEATING / AIR CONDITIONING



The modes, fan speeds, air intake and air conditioning will be controlled automatically by the temperature setting you select.

#### AIR INTAKE CONTROL

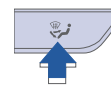


Recirculated air position (LED on)



Outside (fresh) air position (LED off)

#### MODE SELECTION

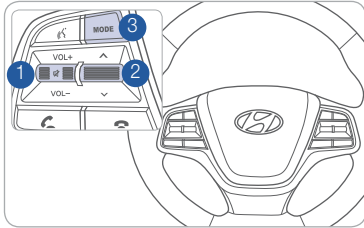


Changes the direction of the air flow as following:





## STEERING WHEEL AUDIO CONTROL



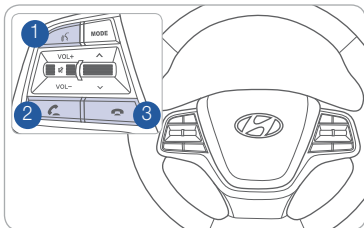
- 1 **VOLUME**  
Raises or lowers the speaker volume. Press to mute.
- 2 **SEEK / PRESET**  
Changes the station.
- 3 **MODE**  
Changes the audio source.

## BLUETOOTH® OPERATIONAL TIPS

In the following situations you or the other party may have difficulty hearing each other:

- 1. When the Bluetooth® volume is too high. High level volume may result in distortion and echo.
- 2. When driving on a rough road, high speeds and / or with the window open.
- 3. When the air conditioning vents are facing the microphone and / or when the air conditioning fan is at the max speed.

### Steering wheel bluetooth® control




- 1 **TALK**  
Activates voice recognition.
- 2 **CALL**  
Places and transfers calls.
- 3 **END**  
Ends calls or cancels functions.

### To Answer a Call:

- Press the  button on the steering wheel.

### To Reject a Call:

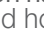
- Press the  button on the steering wheel.

### To Adjust Ring Volume:

- Use the VOLUME buttons on the steering wheel.

### To Transfer a Call to the Phone

(Private call on handset – do not use while driving):

- Press and hold the  button on the steering wheel until the audio system transfers a call to the phone.


### To Finish a Call:

- Press the  button on the steering wheel.

### Making a call using voice recognition:

The menu tree identifies available voice recognition Bluetooth® functions.

### Calling by Name:

- 1. Press the  button.
- 2. Say the following command:
  - “Call <John Smith>”: Connects the call to John.
  - “Call <John Smith>” on <on Mobile / in Office / at Home>: Connects the call to John’s Mobile, Home, or Office phone number.

### Dialing by Number:

- 1. Press the  button.
- 2. Say “Dial Number.”
- 3. Say the desired phone number.

For the complete list of commands, please refer to chapter 4 of your vehicle Owner's Manual or to your Multimedia Owner's Manual.

## BLUETOOTH PHONE PAIRING

Pairing tutorials, phone compatibility and operational tips can be found through the Smart QR code using the QR reader application on your smartphone.



See next page for printed instructions.



## MULTIMEDIA

### BLUETOOTH PHONE OPERATION

Phone setup (pairing phone) with Audio (without touch screen)

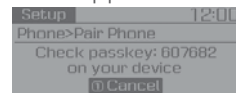
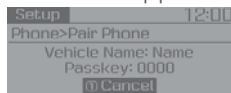
1. Press the button on the steering wheel controls.
2. Select the OK button to enter the Pair Phone screen.



(In the head unit: press the SETUP / CLOCK button, select "Phone", select "Pair Phone")



3. Turn Bluetooth<sup>®</sup> on from your device. Select the car name shown on the screen to pair.
4. Enter the passkey.  
Non SSP supported device: "0000"    SSP supported device: 6 digit

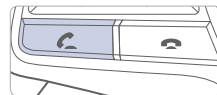


5. Connect Bluetooth.

**NOTE:** Vehicle must be parked to complete the pairing process.

Phone setup (pairing phone) with Audio (with touch screen)

1. Press the PHONE button in the head unit or the button in the steering wheel remote control.



2. Turn Bluetooth<sup>®</sup> on from your device. Select the car name shown on the screen to pair.
3. Enter the passkey or accept the authorization popup. (The default passkey is 0000).

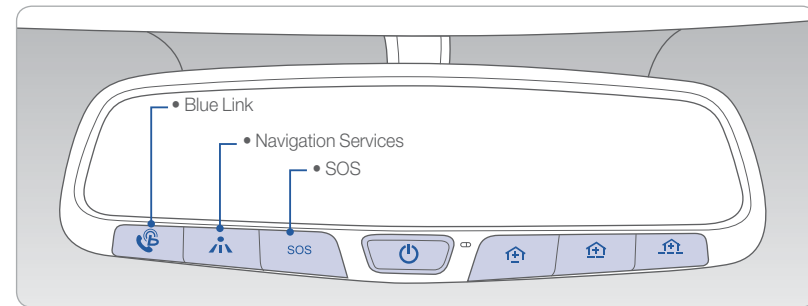


4. Connect Bluetooth.

**NOTE:** Vehicle must be parked to complete the pairing process.



### BLUE LINK TELEMATICS SYSTEM



Blue Link subscription is required. To enroll, please visit your dealership or MyHyundai.com.

Press the button to access the voice-response menu of services.

- You can say:

- Service Link
- Roadside Assistance
- Blue Link Account Services
- Help
- Cancel

For vehicles equipped with factory-installed navigation, press the button for Destination Voice Search Powered by Google™.

Press the **SOS** button for SOS Emergency Assistance.

Visit HyundaiBlueLink.com for more information or refer to your Blue Link User's Manual for detailed information on system operation.

For immediate assistance with subscription services, please call 1-855-2BLUELINK (1-855-225-8354).

Google™ is a registered trademark of Google, Inc.



## MULTIMEDIA



### Blue Link Mobile App



You can download the Blue Link mobile app to your compatible smart phone from the following sites:

- iPhone® — Apple® App Store
- Android™ — Google Play™

Visit [HyundaiBlueLink.com](http://HyundaiBlueLink.com) FAQs to see a list of compatible devices.



Scan to learn more about the Blue Link mobile app and Remote features.

### Remote Start

Remote Start enables you to remotely start your vehicle virtually from anywhere. For vehicles equipped with full-automatic temperature control, you can also enable climate control remotely and turn on the front window defroster, ensuring a warm or cool car is ready to go when you are.

- To use this feature, you must have a Blue Link Personal Identification Number (PIN). To create or change your PIN, log in to [www.MyHyundai.com](http://www.MyHyundai.com).

#### Remember:

- Remote Start will automatically shut off after 10 minutes or after selected engine timer runs out.
- While this feature is active, the parking lights will blink until the vehicle is turned off or when vehicle is in operation.
- To continue to operate the vehicle, the proximity key must be inside the vehicle with the driver, prior to pressing the brake and being able to move the gearshift from the P (Park) position.

**NOTE:** Remote Start is not available on all models. Remote Start is only available for Push Start equipped vehicle with an Automatic Transmission. Remote Start with Climate Control additionally requires Fully Automatic Temperature Control.

### Preconditions:

- Ignition is OFF
- Alarm is armed (i.e., vehicle locked by key fob Remote Door Lock)
- Gearshift level is in the P (Park) position
- Brake pedal is not depressed
- Engine hood is securely closed
- All the doors are closed and locked
- The tailgate or trunk lid is closed
- The security / panic system is not activated
- The proximity key is not inside the vehicle
- The battery power is not low
- Vehicle is located in an open area
- It has been less than 4 days since last vehicle ignition off
- Vehicle located in area with good cell reception

### Remote Start will terminate:

- After 10 minutes or after selected engine timer runs out
- Brake is pressed without the proximity key inside the vehicle
- Alarm is triggered without the proximity key inside the vehicle
- Door / trunk is opened from inside the vehicle

**Notice:** Laws in some communities may restrict the use of the features that remotely start the engine. For example, some laws may require a person using the remote start feature to have the vehicle in view when doing so, or limit the length of time a vehicle engine may idle. Please check local and state regulations for any requirements and restrictions on remote starting of vehicles and engine idling time.

#### WARNING!

Do not remote start vehicle in an enclosed environment (i.e., closed garage). Prolonged operation of a motor vehicle in an enclosed environment can cause a harmful build-up of carbon monoxide. Carbon monoxide is harmful to your health. Exposure to high levels of carbon monoxide can cause headaches, dizziness or in extreme cases unconsciousness and / or death. Do not leave children or animals unattended in a vehicle while using the remote start function.

#### CAUTION!

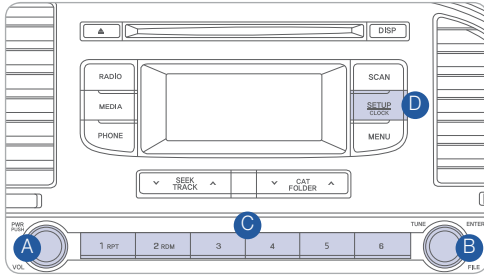
If the vehicle's windshield wipers are left on when the vehicle was last driven, then the wipers will turn on if the remote start function is activated. To avoid damage to the wiper blades (i.e., due to heavy ice or snow accumulated on the windshield), please always turn the vehicle's windshield wipers off when parking the vehicle.



## MULTIMEDIA

### STANDARD AUDIO

#### Audio mode



Press the POWER button **A** to turn on the radio.

- TUNING / LISTENING TO CHANNELS
  1. Press the RADIO button to select FM / AM / XM, or press each FM / AM / XM button.
  2. Rotate the TUNE knob **B** to a desired channel.

#### NOTE:

A clear view of the southern sky is recommended to ensure Sirius XM® radio reception.

- SETTING THE PRESET MEMORY BUTTONS (FM / AM / Sirius XM®)  
Press and hold any preset button **C**.
- ADJUSTING THE SOUND CONTROL
  1. Press the SETUP / CLOCK button **D**.
  2. Select “Sound” on the screen.
  3. Select “Tone” or “Position” on the screen.

#### NOTE:

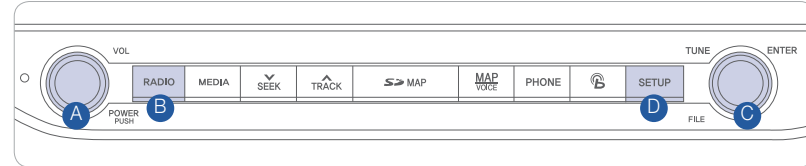
Rotate the TUNE knob to scroll to desired menu / number. Press the TUNE knob to select / set the highlighted option.

Please refer to your Owner's Manual for more detailed information on how to use your audio system. Complimentary XM subscription ends three months following the vehicle date of sale. Please contact Sirius XM® at 1-888-539-7474 to renew your XM subscription.



### NAVIGATION

#### Audio mode



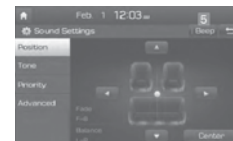
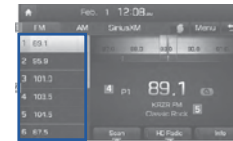
Press the POWER button **A** to turn on the radio.

- TUNING / LISTENING TO CHANNELS
  1. Press the RADIO button **B**.
  2. Rotate the TUNE knob **C** to a desired channel.

#### NOTE:

A clear view of the southern sky is recommended to ensure Sirius XM® radio reception.

- SETTING THE PRESET MEMORY BUTTONS (FM / AM / Sirius XM®)  
Press and hold any preset button until an audible beep is heard to store current channel.
- ADJUSTING THE SOUND CONTROL
  1. Press the SETUP button **D**.
  2. Press the “Sound” button on the screen.
  3. Touch the on-screen arrows to adjust the desired setting.







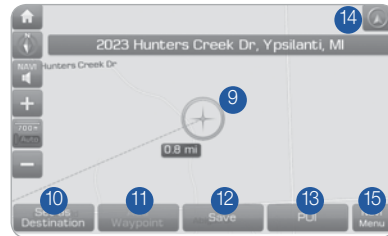
## MULTIMEDIA

### NAVIGATION

#### Basic features on the map screen



- 1 Move to the Home Screen
- 2 Change the map view mode
- 3 Adjust the volume
- 4 Zoom in the map
- 5 Set the zoom level automatically according to the guidance
- 6 Zoom out the map
- 7 Quick and easy selection of a destination and options
- 8 Enter the navigation menu screen



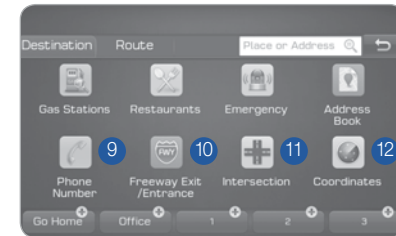
- 9 Touch to scroll the map
- 10 Quick and easy selection of a destination from the map screen
- 11 Set a waypoint to the current route
- 12 Save frequently used address to the address book
- 13 Find a POI (Point Of Interest) around the current position
- 14 View the vehicle's current position on the map screen
- 15 Enter the navigation menu screen



#### Basic features on the Navi Menu screen



- 1 Set the destination by address search
- 2 Select from the previously input addresses and POI's
- 3 Runs Google Local Search
- 4 Select the desired item in the POI sub-categories
- 5 Search gas stations
- 6 Search restaurants

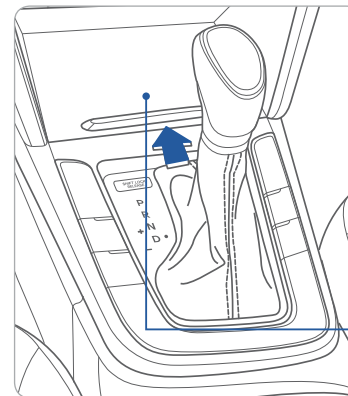


- 7 Search emergency facilities
- 8 Search the destination with the address book
- 9 Search the destination by phone number
- 10 Type freeway name and exit / entrance to search
- 11 Type the 1st Street name, the State, the 2nd Street name
- 12 Type coordinates to search

#### NOTE:

Flick up / down to scroll through the Navigation Menu.

### AUX, USB AND iPod PORT



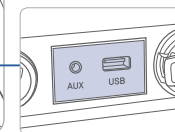
Use the input jack to connect an external audio device and listen to it through the audio system in your vehicle.

#### To open the cover:

Push the lip on the cover forward.

#### To close the cover:

Push and release the lip of the cover forward and it will slowly close.





## ANDROID AUTO™

### REQUIREMENTS:

- Micro USB cable
- OS Android™ 5.0 or higher
- Compatible Android Phone
- Data and wireless plan for applicable features

### BEFORE YOU BEGIN:

- Android Auto features may operate differently than on your phone.
- Message and data charges may apply when using Android Auto.
- Android Auto relies on the performance of your phone. If you experience performance issues:
  - Close all apps and then restart them or
  - Disconnect and then reconnect your phone
- Using the micro USB cable that was provided with your phone is recommended.
- When Android Auto is active, your in-vehicle voice recognition system is disabled and you will be using talk to Google™ to make your requests.

### ANDROID AUTO SUPPORT



<https://support.google.com/androidauto/>

## PHONE SETUP

Turn on the Bluetooth® on your phone and connect the micro USB cable to your phone and the USB port on the vehicle.

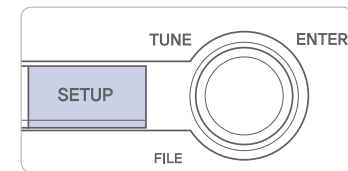
Phone will prompt you to download the Android Auto app and update other needed apps (i.e. Google Maps™, Google Play Music™, Google Now™).

**NOTE:** Vehicle must be parked.

- Location mode setting should be set to High accuracy.
- Vehicle and phone setup should be completed in one sitting. If phone setup needs to be resumed, we recommend to Force Stop the Android Auto app on the Phone then reopen the app and accept the Disclaimer notifications.

## CAR SETUP

1. Press the SETUP button.
2. Touch the “Connectivity” icon on the screen.
3. Select “On” for Android Auto.
4. Connect your Android phone to the vehicle USB port. Agree to the notification and disclaimers on your phone then the “Android Auto” icon will appear confirming the setup.



For more detailed information on how to operate Android Auto, please refer to your navigation manual.

For additional Android Auto support, please refer to the Android Auto Support Website

<https://support.google.com/androidauto/>

Android Auto, Google Play, Android, and other marks are trademarks of Google Inc.



## MULTIMEDIA

### APPLE CARPLAY™

#### REQUIREMENTS

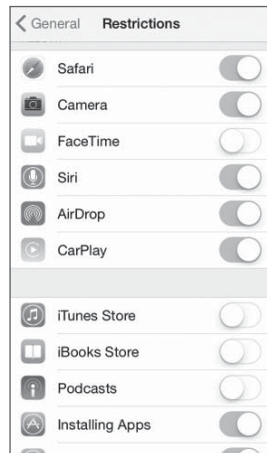
- Apple Lightning® cable
- Latest iOS
- iPhone® 5 or above
- Data and wireless plan for applicable features

#### BEFORE YOU BEGIN

- Apple® CarPlay features may operate differently than on our phone.
- Message and data charges may apply when using Apple CarPlay.
- Apple CarPlay relies on the performance of your phone. If you experience performance issues:
  - Close all apps and then restart them or
  - Disconnect and then reconnect your phone
- Using the Apple Lightning cable that was provided with your phone is recommended.
- When Apple CarPlay is active, your voice recognition system is disabled and you will be using Siri® to make your requests.

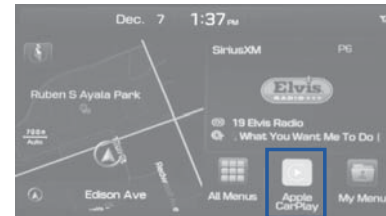
#### PHONE SETUP

On your phone, go to Settings > General > Restrictions > CarPlay to allow CarPlay access.



### CAR SETUP

1. Press the SETUP button.
2. Touch the “Connectivity” icon on the screen.
3. Touch “iOS” on the Connectivity Settings screen then touch “On” to enable Apple CarPlay.
4. Connect your Apple iPhone to the vehicle USB port then touch ‘OK’ when the pop-up message appears. The Apple CarPlay icon will now appear on the vehicle Home screen confirming the setup.

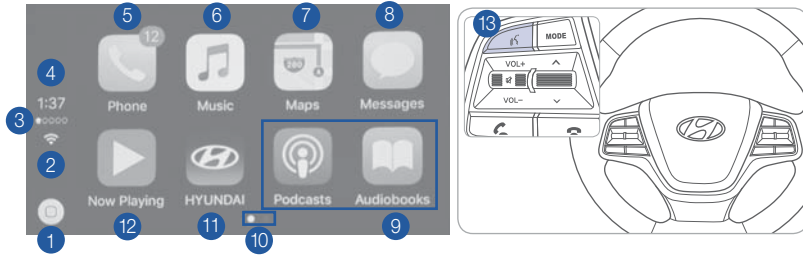


Apple CarPlay, Apple, and other marks are trademarks of Apple Inc.



## MULTIMEDIA

### CarPlay Home Screen



- |                         |                                  |
|-------------------------|----------------------------------|
| 1 HOME ICON             | 7 APPLE MAPS                     |
| 2 WIRELESS CONNECTIVITY | 8 MESSAGES                       |
| 3 CELLULAR SIGNAL       | 9 3RD PARTY APPS                 |
| 4 PHONE TIME            | 10 SCREEN PAGE INDICATOR         |
| 5 PHONE                 | 11 EXIT TO HYUNDAI               |
| 6 APPLE MUSIC™          | 12 CURRENT CARPLAY AUDIO PLAYING |

### SIRI

Apple CarPlay uses Siri to perform many actions like sending messages, placing calls, and looking up/setting POI/Destinations. A Siri session can be initiated on any screen by:

1. Touch and holding the HOME icon 1 on the CarPlay screen or
2. Press the steering wheel VOICE RECOGNITION 13 button.

Note: Ensure Siri feature is set to ON in your phone (Go to Settings > General > Siri).

3. Say any of the following commands;
  - “Text <John Smith> ‘Call you later’” to send a text message.
  - “Read text messages” to read available text message.
  - “Call <John Smith>” to make a phone call.
  - “Find <POI/Destination>” to locate a POI/Destination.

### PHONE

Touch the PHONE 5 icon to access the Phone screen. Siri will automatically asks ‘Who you would like to call’ when the PHONE 5 icon is selected.

### APPLE MUSIC

Touch the APPLE MUSIC 6 icon to access the Apple Music screen.

### APPLE MAPS

Touch the APPLE MAPS 7 icon to access the Apple Map screen.

### MESSAGES

Touch the MESSAGES 8 icon to access the Message screen. Siri will automatically asks ‘To hear unread messages or create a new one’ when the MESSAGE icon is selected.

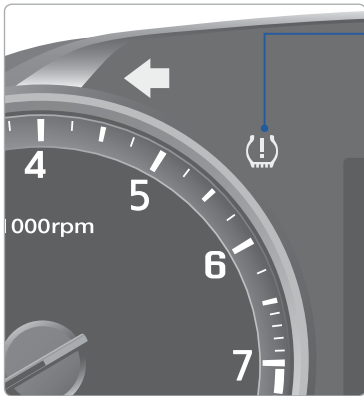
### 3rd PARTY APPS

Supported CarPlay apps that are downloaded on your phone will appear on the CarPlay screen. Touch the apps icons to access those supported apps.

NOTE: A list of the supported CarPlay supported apps can be found at <http://www.apple.com/ios/carplay/>



## TIRE PRESSURE MONITORING SYSTEM (TPMS)



Low Tire Pressure Indicator / TPMS Malfunction Indicator



Low Tire Pressure Position Indicator and Tire Pressure Indicator (Shown on the LCD display)

### LOW TIRE PRESSURE INDICATOR

Illuminates if one or more of your tire is significantly under-inflated.

### TPMS MALFUNCTION INDICATOR

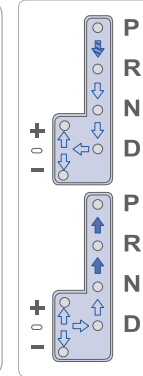
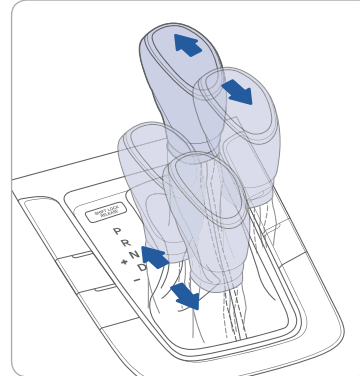
Blinks for approximately one minute, then remains illuminated when there is a malfunction with the TPMS. Inspect all tires and adjust the tire pressure to specification. If the lamp remains illuminated, have the system checked by an authorized Hyundai dealer as soon as possible.

### LOW TIRE PRESSURE POSITION INDICATOR AND TIRE PRESSURE INDICATOR (LCD DISPLAY)

Tire pressures will display after driving a short distance. If a tire pressure drops lower than predetermined specification, the Low Tire Pressure Indicator (⚠) will illuminate and the LCD (i) display will indicate tire(s) requiring air.

The Tire Specification and Pressure Label located on the driver's side center pillar gives the tire pressures recommended for your car.

## AUTOMATIC TRANSMISSION



(➡) : Press the shift button, then move the shift lever.

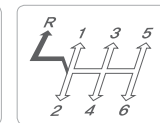
(⚡) : Depress the brake pedal, press the shift button, and then move the shift lever.

(➡) : Move the shift lever.

### Manual shift mode

Move the shift lever from D (Drive) into the manual gate to select. Move the shift lever forward (+) to up shift or rearward (-) to downshift.

## MANUAL TRANSMISSION

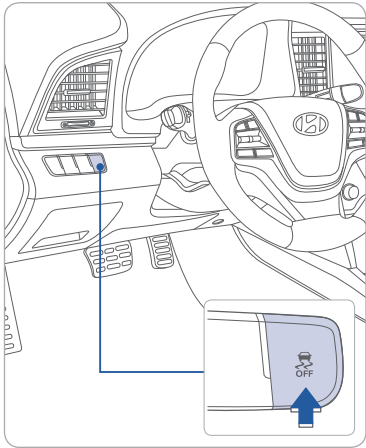


### Engaging reverse

When shifting into R (Reverse) gear, depress the button 1 and then shift into R (Reverse) gear position.



## ELECTRONIC STABILITY CONTROL (ESC)



The ESC system is an electronic system designed to help the driver maintain vehicle control under adverse conditions.

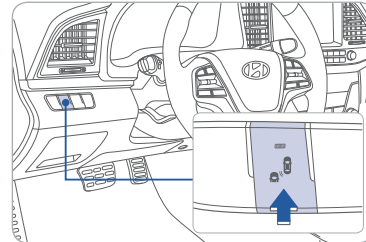
ESC automatically selects the ON position when the engine is started.

To turn off the Traction Control  
Press the ESC OFF button.

To turn off the Traction and the Stability Control  
Press and hold the ESC OFF button for over 3 seconds.



## BLIND SPOT DETECTION SYSTEM (BSD)



The BSD (Blind Spot Detection) system uses a radar sensor to alert the driver while driving. It monitors the rear area of the vehicle and provides information to the driver.

- 1 Blind Spot Detection
- 2 Lane Change Assist
- 3 Rear Cross Traffic Alert

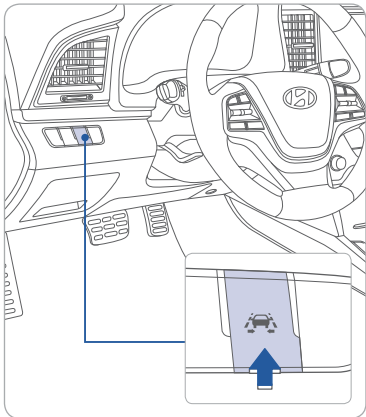
- To turn on the BSD, press the BSD button (indicator illuminated).
- To turn off the BSD, press the BSD button again.

The system will activate if vehicle speed exceeds 20 mph.

### Rear Cross Traffic Alert

When the transmission is put in R (Reverse), the system provides an alert if a vehicle is approaching from the sides.

## LANE KEEPING ASSIST SYSTEM (LKAS)

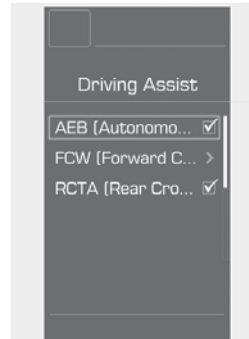


The Lane Keeping Assist System detects lane markers on the road, and assist the driver's steering to help keep the vehicle between lanes.

- To turn on the LKAS, press the LKAS switch.
- To turn off the LKAS, press the switch again.

LKAS operates only while the vehicle speed is over 40mph and below 110mph.

## AUTONOMOUS EMERGENCY BRAKING (AEB)

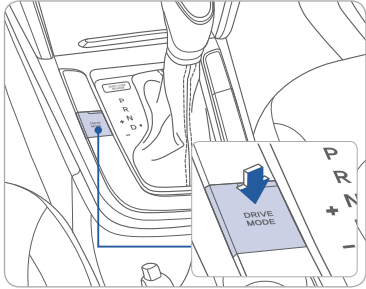


The Autonomous Emergency Braking (AEB) system is designed to detect and monitor the vehicle ahead or detect a pedestrian in the roadway and warn the driver if a collision is imminent.

To operate the system, select the AEB (Autonomous Emergency Braking) in the LCD cluster display under the User Settings. Please refer to your Owner's Manual for further information.



## DRIVE MODE INTEGRATED CONTROL SYSTEM



You can select the drive mode according to your preference or the road condition. The system resets to NORMAL mode (except if it is in ECO mode) every time the engine is restarted. Each time you press the button, the drive mode changes as following :



NORMAL mode is not displayed on the instrument cluster.

### NORMAL mode

Normal mode provides regular daily driving performance with some fuel efficiency.

### ECO mode

Eco mode system helps to improve fuel efficiency. When the Eco mode system is activated, the vehicle acceleration, gear shift points and air conditioning performance will be reduced to conserve the fuel consumption.

### SPORT mode

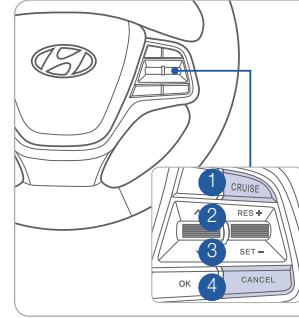
Sport mode focuses on engaging driving dynamics by adjusting the steering feel along with the responsiveness of the engine and transmission.

#### To improve your fuel efficiency:

- Drive smoothly and accelerate at a moderate rate.
- Avoid heavy accelerations.
- Maintain steady cruising speed.
- Adjust the vehicle speed to the traffic condition and avoid speed changes.
- Avoid unnecessary braking.
- Keep the tires inflated to the recommended tire pressure.
- Do not idle the engine longer than necessary.



## CRUISE CONTROL / SMART CRUISE CONTROL

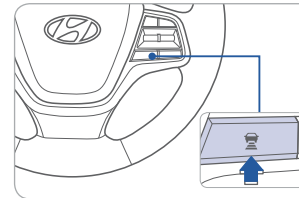


The Cruise Control system allows you to program the vehicle to maintain a constant speed without depressing the accelerator pedal.

- 1 To turn On / Off the Cruise Control
- 2 To Resume or Increase the Cruise Control speed
- 3 To Set or Decrease the Cruise Control speed
- 4 To Cancel the Cruise Control

#### NOTE:

The Smart Cruise Control cancels automatically if vehicle speed is under 6 mph. Depress the accelerator or brake pedal to actively adjust the vehicle speed, and the distance to the vehicle ahead.

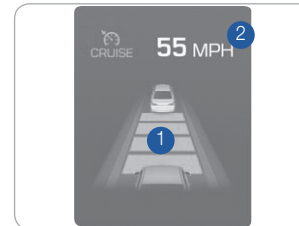
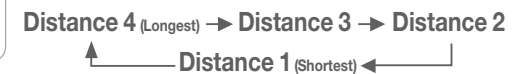


### Setting Vehicle Distance (Smart Cruise Control only)

This system allows you to program the vehicle to maintain constant speed and distance without depressing the accelerator or brake pedal.

The vehicle to vehicle distance 1 will automatically activate when you set the cruise speed 2.

Each time the vehicle distance set button is pressed, the vehicle to vehicle distance changes as following:



If your vehicle is equipped with Smart Cruise Control and you wish to turn off the vehicle distance function, you can change the cruise control setting to a standard setting.



Press the Cruise Control button on the steering wheel to turn on the Cruise Control. Then press and hold the vehicle distance button for over 2 seconds to toggle between the Smart Cruise Control (SCC) and the Cruise Control (CC) mode.

Please refer to your Owner's Manual for more information.

**HYUNDAI VEHICLE OWNER PRIVACY POLICY**

Your Hyundai vehicle may be equipped with technologies and services that use information collected, generated, recorded or stored by the vehicle. Hyundai has created a Vehicle Owner Privacy Policy to explain how these technologies and services collect use and share this information.

You may read our Vehicle Owner Privacy Policy on the Hyundaiusa.com website at:  
<https://www.hyundaiusa.com/owner-privacy-policy.aspx>

If you would like to receive a hard copy of our Vehicle Owner Privacy Policy, please contact our Customer Connect Center at:  
 Hyundai Motor America/Phoenix  
 P.O. Box 83835  
 Phoenix, AZ 85071-3835  
 800-633-5151  
[consumeraffairs@hmausa.com](mailto:consumeraffairs@hmausa.com)

Hyundai's Customer Connect Center representatives are available Monday through Friday, between the hours of 5:00 AM and 7:00 PM PST and Saturday and Sunday between 6:30 AM and 3:00 PM PST (English).

For Customer Connect Center assistance in Spanish or Korean, representatives are available Monday through Friday between 6:30 AM and 3:00 PM PST.

**ELANTRA CUSTOMER DELIVERY CHECK LIST**

HYUNDAI OWNER	DEALERSHIP NAME
SALES CONSULTANT	DATE
VIN	PREVIOUS VEHICLE

**BEFORE DELIVERY**

- CONFIRM "GOOD BATTERY" USING GR8 AND STAPLE TEST TICKET HERE
- SET TIRE PRESSURE LF \_\_\_ RF \_\_\_ RR \_\_\_ LR \_\_\_
- VERIFY VEHICLE IS CLEAN, IN GOOD CONDITION, FREE OF CHIPS AND SCRATCHES · CLEAN WINDSHIELD AND BACK WINDOW
- ENSURE FLOORMATS ARE SNAPPED INTO PLACE

Sales Consultant	Date	Sales Manager	Date
Customer		Date	
Email			